

Features

- Each NC160 CE module supports up to six NC415G3 or NC404TS master stations, 64 room controllers (4 runs of 16 controllers each), and 16 duty stations (4 duty stations per run)
- Enables the use of IR160 Audio Stations and master stations
- Network up to 20 Tek-CARE modules together on the Tek-CARE system
- Stackable shelf mount; 2U rack mount kit included
- Programmable using our exclusive Config Tool software via laptop connected to the Tek-CARE Network

Description

The NC160 Central Equipment (CE) Module is scalable so that up to 20 CE modules can be networked together. Each CE module provides connections and power for 64 room controllers and up to six master stations. (Limit of 4 master stations on a CE module when LI484P5 4-LED multicolor dome lights are connected.)

CE modules can be stacked on a shelf, or rack mounted. The NC160 CE Module includes two field-replacable back-up batteries that provide system power during the facility's switchover to emergency generator power.

TekTone's LS450 Config Tool software is also included with purchase of an NC160 module.

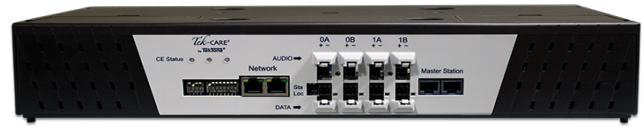
Listings



UL® 1069, UL® 2560, and cUL® listed to CSA C22.2 No. 205; UL® File Number E71599.



RoHS Compliant.



NC160 Central Equipment Module

Specifications

Dimensions:	3.25"H × 17.00"W × 10.05"D (83 mm × 432 mm × 255 mm)
Construction:	PC board with quality electronic components
Input Power:	90 VAC–264 VAC at 50Hz–60Hz
Typical current Usage:	1.6A at 115 VAC or 0.9A at 230 VAC
Temperature:	0°–70°C
Humidity:	5–95% (non-condensing)
Built-in Surge Protection:	783V clamping
Wiring:	TekTone recommends Belden 5300UP cable or equivalent for the audio bus on the Tek-CARE160 system

Required Components

LI122UN Room Controller with Dome Light or PM120 Room Controller
NC415G3 or NC404TS Master Station
SF121 Single Patient Stations, SF122 Dual Patient Stations, or SF123 Customizable 2-Button Pull-Cord Stations

Optional Components

CT400P5 8P8C Splitters (2 included)
SF125 Duty Station
NC475 Tek-CARE Appliance Server
PM123 Auxiliary Input Module
IR160 Audio Station

Maximum number of master stations, multicolor dome lights, and duty stations may be calculated using the load value calculator available from www.tektone.com/resources